

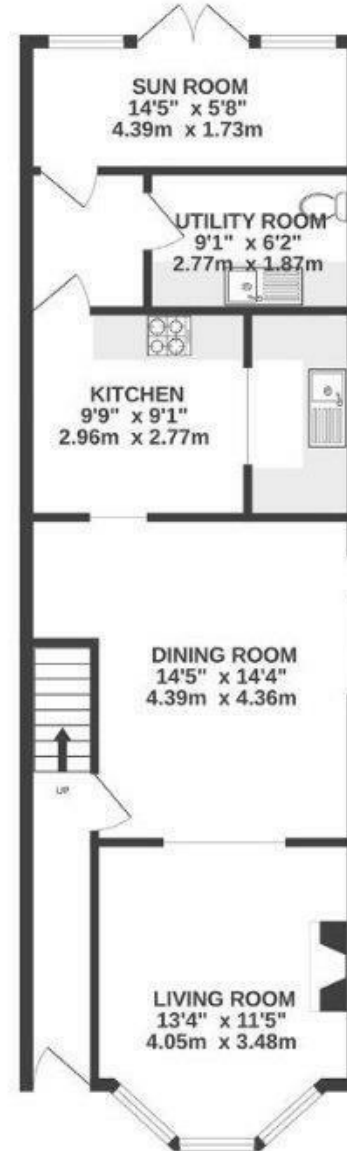
Bloomfield Road

BRISLINGTON

APPROXIMATE FLOOR AREA
137 SQM / 1473 SQFT



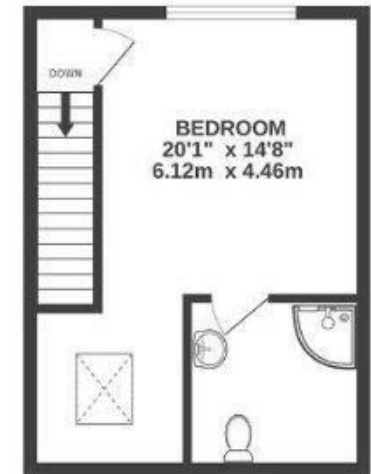
GROUND FLOOR



FIRST FLOOR



SECOND FLOOR



Boardwalk

Bloomfield Road

, BRISTOL

£
£550,000

zzz
4 Bedrooms

📍
BS4 3QP

🛁
2 Bathrooms

"We love the space that this house has given us - it's allowed us to grow our family and my business, as well as being a great space to have friends and family round and for the kids to play. I love having a cup of tea in the garden - it's a lovely sunny spot to take 5! Being so close to the school and high street is fantastic - it feels like there's a real sense of community, always seeing someone you know!"

